

NE GREENWAY TRAIL PEDESTRIAN BRIDGE PROJECT



CITY OF
LANCASTER

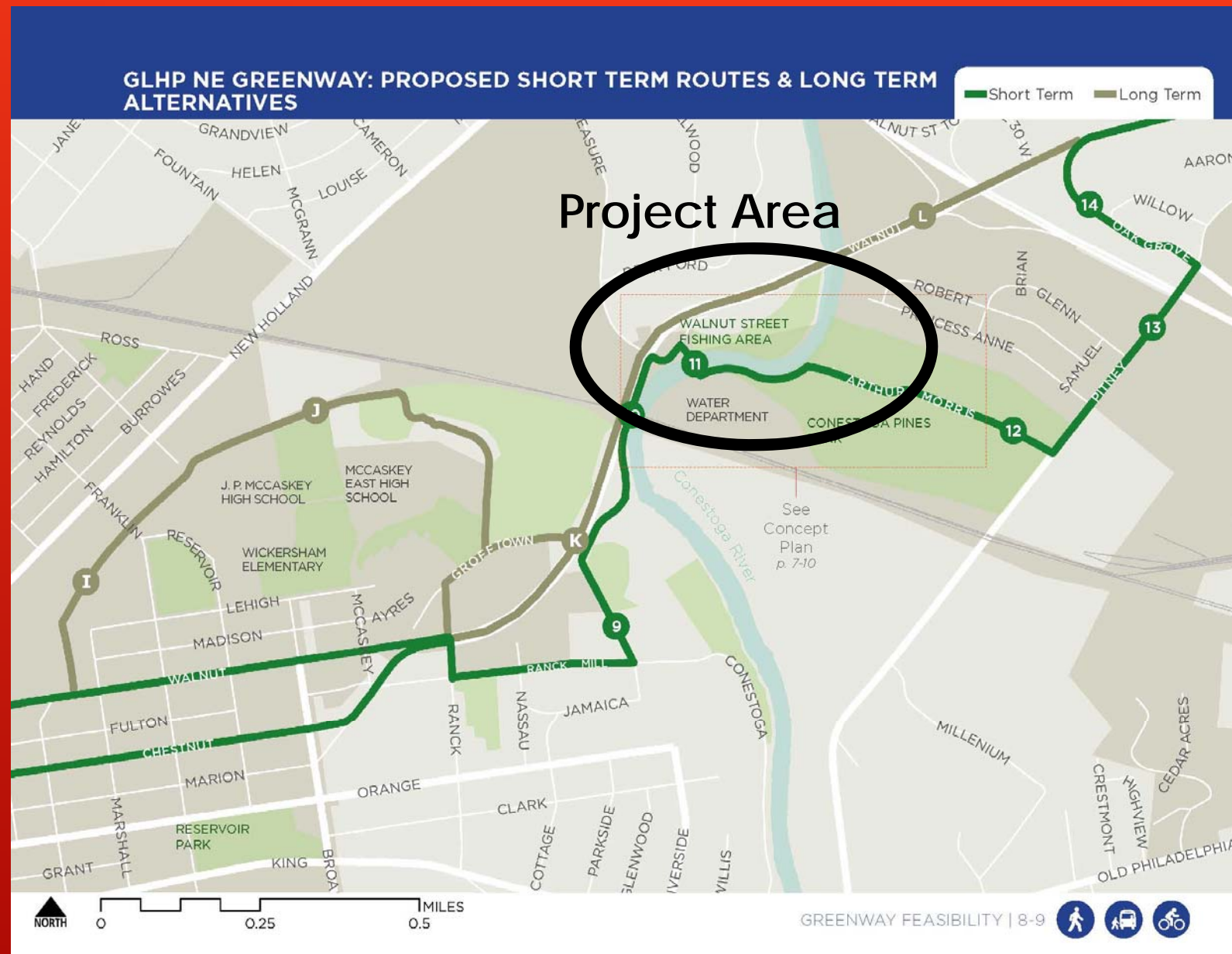
A City Authentic

The City of Lancaster has initiated design on the relocation of the Armstrong bridge in the area of the Walnut Street Fishing Area and Conestoga Pines Park. This presentation provides an update on the project and invites public feedback. A public meeting will also be held on January 31st at a location to be identified.

The iconic Armstrong Bridge has been in storage since it was removed from the Dillerville rail yard in 2015. The City is now ready to move forward with reusing the bridge to cross the Conestoga River between Walnut Street and Conestoga Pines Park. The design process evaluated various options for the location of the bridge and ultimately decided that the least impactful location to the environment and the river, is adjacent to the existing vehicular bridge used by the City water plant staff. The bridge will be placed adjacent to the existing bridge on existing piers. As the Armstrong bridge is only wide enough for pedestrians, the existing bridge will be closed to vehicular traffic and will be used by bicyclists. See the rendering on page 4.

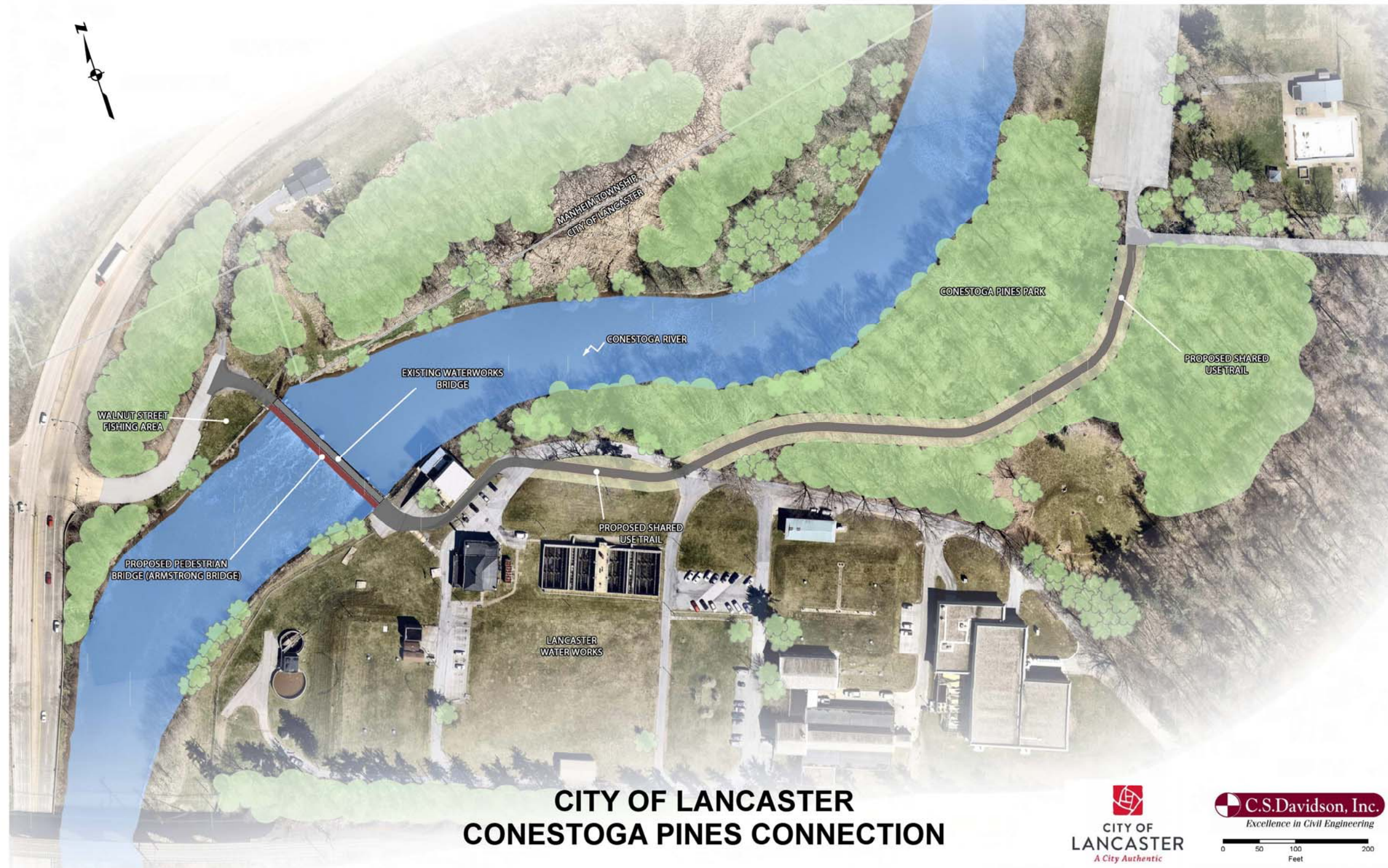
Additionally, a 12 foot wide asphalt trail connection will be constructed from the bridge to Conestoga Pines Park. This connection is the first step in connecting the City center to the Greater Lancaster Heritage Pathway (Goat Path), a portion of which is shown on the next page. In conjunction with the trail construction, a deteriorated sewer line will also be replaced.

PROJECT INTRODUCTION



SNEAK PEAK OF ACTIVE TRANSPORTATION PLAN

- Portion of Greater Lancaster Heritage Pathway (Goat Path to the east)
- Long term (brown lines) and short term (green lines) connections



Project scope

- Construct the Armstrong bridge adjacent to existing bridge
- Replace the sewer line between Eden Manor and the proposed bridge
- Construct the 12 foot wide asphalt trail between Conestoga Pines and the proposed bridge

CITY OF LANCASTER CONESTOGA PINES PEDESTRIAN BRIDGE

