



CITY OF LANCASTER

Bureau of Solid Waste & Recycling
City of Lancaster
120 North Duke Street
P. O. Box 1599
Lancaster, PA 17608

PRSRT STD
US POSTAGE
PAID
HARRISBURG, PA
PERMIT NO. 693

Important information
on trash & recycling in
the City of Lancaster
including a calendar.

SOLID WASTE HOTLINE: 717-291-4744 • swhotline@cityoflancasterpa.gov

2023 Newsletter Welcome Letter from the Mayor

The weekly residential curbside waste and recycling collection program continues to be a key part of the city's effort to keep neighborhoods clean and meet our recycling goals, which is a direct result of the recycling efforts by residents. Thanks for your recycling efforts.

The city drop-off recycling center located at 850 New Holland Avenue still accepts **newspaper, magazines, office paper and chipboard/boxboard at no charge**. Before delivery to the recycling center residents should sort paper by type and flatten all boxes. Although staff is on site, the Recycling Center is a self-serve facility.

These changes not only affect what we collect at curbside but will impact the cost of the program to residents – less recycling leads to more trash and higher tipping fees. Unfortunately, we must raise the annual trash bill by \$6/unit. Effective January 1, 2023, each household will now pay \$78/quarter or \$312/year.

Despite the increase in cost, we ask that residents continue to recycle at curbside and focus on quality of materials. Please only place in the bin what is requested. If you have questions, contact the solid waste hotline at (717) 291-4744 or email swhotline@cityoflancasterpa.gov. We again thank you for your support of this program which contributes to the city's goal of environmental sustainability.

Danene Sorace
Mayor

Recycling Resources



The City, County and Penn Waste offer a variety of ways to educate the public about waste and recycling collection programs. The following are sources of information:

City of Lancaster

Solid Waste Hotline:

☎ **717-291-4744** or

✉ swhotline@cityoflancasterpa.gov

*Program information and reporting service
issues or missed collections*

🌐 www.cityoflancasterpa.gov

📘 www.facebook.com/cityoflancasterpa

🐦 www.twitter.com/cityoflancpa

🏠 www.nextdoor.com

*Must sign up with your address on Nextdoor to
get updates from the City of Lancaster*

Collection Schedule:

🌐 www.cityoflancasterpa.gov/resident/schedule

Penn Waste

🌐 www.pennwaste.com

Announcements and videos about recycling

✉ www.pennwaste.com/e-news-signup

Sign up to receive updates via email

County Solid Waste Authority

🌐 www.lcswma.org

*Information about Household Hazardous Waste
program and management/disposal of waste
and recyclable materials*

Special Waste Disposal and Recycling Options



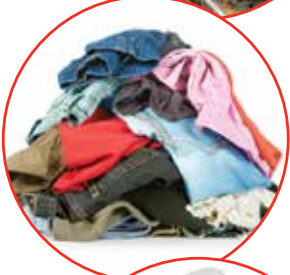
► Electronics: Televisions and Computers

The state enacted legislation effective January 2013 that prohibits televisions and computers/peripherals (covered devices) from being disposed as waste. This requirement was established in order to recycle these valuable items. The law also put into place a network of retailers and public collection facilities that will accept these from residents at no charge. Covered devices need to be fully intact to be recycled. Check with retailers where you purchase new electronics if they will take back your unwanted device. The Lancaster County Solid Waste Management Authority (LCSWMA) Household Hazardous Waste (HHW) Facility located at 1299 Harrisburg Pike accepts **for free** covered devices along with other HHW from county residents. Visit www.lcswma.org for details.



► Liquid Grease/Oil from Home Fryers

Disposing liquids such as grease and vegetable oil in the trash can create a mess during collection since the solid waste system is not designed for this material. Similarly, this material should never be poured down the drain into the sewer system where it can clog pipes. Liquid oils and grease from cooking is recyclable. The Lancaster County Solid Waste Management Authority (LCSWMA) accepts this material at no charge at their HHW facility located at 1299 Harrisburg Pike. Visit www.lcswma.org for details.



► Textiles

Clean, unwanted and unusable textiles, such as clothing, bedding, towels, shoes and accessories can have another life. There are many local non-profit organizations that accept and need textiles for reuse or resale to support their programs. Even clothing that is stained, torn or unwearable can be remanufactured into other products. Look for locations to recycle clean textiles at www.Earth911.com.



► Shredded paper

Office paper is not collected at curbside because many residents shred mail and other documents due to concern about identity theft. Shredded paper emptied out of recycling containers can become litter and is problematic at recycling facilities. Residents are encouraged to recycle office paper, whether shredded or flat sheet, by taking it to the City Drop-off Recycling Center located at 850 New Holland Avenue.



► White Goods

These are large appliances including: refrigerators, freezers, air conditioners, dehumidifiers, water coolers, clothes washers and dryers, water heaters, and microwaves. These will not be collected with weekly trash. The city offers a monthly collection program (see Calendar) for these items with a \$15 tag purchased from the Treasury Office, 39 West Chestnut Street (735-3425). The city program ensures that the refrigerant gases are recovered in compliance with federal air quality regulations.



► Oversized Refuse

The weekly collection program allows each residential unit to set out one (1) oversized item each week, which then limits the set out to four (4) trash containers for that week. Oversized items include: sofas, stuffed chairs, furniture, mattress and box spring sets, or a roll of carpet no longer than 4 foot wide. An oversized item can be no heavier than what two men can lift and load into a trash truck. If in doubt, contact the Solid Waste Hotline.



► Medical Waste

Medical waste generated in the home must be properly managed to protect people, animals and the environment. Clothing, bedding, bandages and other waste soiled with body fluids can be discarded by placing in a sealable bag and disposing in the trash. Please follow these guidelines for other types of medical waste:

Sharps – for safe disposal of sharps (needles, lancets, etc.) please place in a specially made container available for this purpose from pharmacies. Sharps may also be placed in an opaque hard plastic container with a screw cap. Place sharps in the container along with a small amount of rubbing alcohol or bleach to disinfect. To dispose, secure cap with tape and place container in the trash. Do not place in recycling container.

Prescription Drugs – outdated or unwanted prescription drugs should be disposed of according to instructions on the drug label or may be delivered to drug take-back programs. The City of Lancaster Police Department has a prescription drug drop off box, located at 39 W. Chestnut Street. For additional locations visit <http://lanaster.crimewatchpa.com/da/11617/post/prescription-drug-drop-locations> Never dispose of pharmaceuticals down the toilet or drain. To dispose in trash, remove the drug from its original package and mix with an undesirable substance like coffee grounds, cat litter or grease/fat. Place in a sealable bag or container and dispose in the trash. For additional information, visit www.disposemy meds.org.

What Goes *in the* Bin?



**CORRUGATED
CARDBOARD**
Includes packing and
shipping boxes
with fluted sheet.



**PLASTIC BOTTLES
& JUGS**
Includes plastic
with a neck.



**METAL FOOD &
BEVERAGE CANS**
Includes food and
beverage cans made
from aluminum or tin.



GLASS
Includes clear, green
and brown glass bottles
and jars.

TIPS to RECYCLE RIGHT

- ✓ Remove lids
- ✓ NO plastic bags
- ✓ No other materials than listed
 - No pots
 - No foil
 - No wire hangers
 - No cutlery

- ✓ Items must be empty and rinsed out
- ✓ Flatten cardboard

For more info visit lcswwa.org/recycling

Inclement Weather

Wintery weather conditions creating icy streets and plowable snow accumulations of 3-4 inches can challenge trash and recycling collection services. When ice and snow make streets and sidewalks treacherous and snow banks along the curb restrict travel lanes preventing access to containers, residents should expect delays or rescheduling. To minimize disruption of service and ensure the safety of collection crews, residents and personal property, please follow these recommendations:

- ❶ If a plowable snow is expected overnight, whenever possible please set out trash after the snow stops or on the morning of collection. Snow covered trash is more difficult to find and collect.
- ❷ Limit set outs and avoid setting out bulk items or extra bags that could be held until conditions improve.
- ❸ If you normally use a wheeled curb cart for trash, instead set out trash in plastic bags that are designed for trash collection and are properly secured to prevent spillage or littering.
- ❹ If snow is piled between the sidewalk and street, make a cutout in the bank to set trash containers or place bags on top of the snow bank ensuring bags can't tumble onto the street or sidewalk.
- ❺ If your recycling container is not full, consider holding it for the following week. If you must set it out on a snow bank, be certain that it will not slide onto the street or sidewalk or spill its contents.
- ❻ If you are missed, contact the Solid Waste Hotline at 717-291-4744 and arrangements will be made for a missed pick-up or taking double the following week.
- ❼ Recognize that the City and Penn Waste want to provide collection services each week, but understand that weather conditions out of our control may cause collection schedule changes. Sign up for current information at: www.pennwaste.com/e-news-signup.

Where can I take recyclable items that aren't the "Big 4"?

The City Drop-Off Recycling Center



Located at
850 New Holland Avenue

HOURS OF OPERATION

Monday through Friday 7 a.m. to 4:00 p.m.
Every 3rd Saturday 7:00 a.m. - 11:00 a.m.

NEWSPAPER

Accepted: Newspaper (including ads/inserts), Phonebooks, Softcover Books



MAGAZINES

Accepted:

- Magazines
- Catalogs
- Glossy/shiny paper (Brochures, Pamphlets, Mail Fliers)



MIXED OFFICE PAPER

Accepted:

- Printer paper
- Envelopes
- Index cards
- File folders
- Dividers
- Uncoated (not glossy) junk mail



CORRUGATED CARDBOARD

Accepted:

- Boxes with a fluted center
- Brown paper bags



CHIPBOARD

Accepted:

- Boxes **without** a fluted center (Cereal boxes, egg cartons, toilet paper rolls)



When delivering to the Recycling Center, please:

- 1** Sort paper by type at home or at work before going to the Recycling Center.
- 2** Flatten all boxes to save space.
- 3** Save up a quantity of material to make your delivery worthwhile.
- 4** Although staff is on site, the Recycling Center is a designed to be self-serve facility.

Yard Waste and Leaf Collection

Residents are required to separate yard waste and leaves from their trash and the City provides seasonal collection. Set out for collection on the schedule found in the calendar.



Tie brush into bundles no longer than 4 feet and with no material more than 2" in diameter.



Each bag or bundle must weigh no more than 30 pounds.



There is no limit to the number of paper leaf and yard waste bags or bundles of brush for collection.



Roll tops of bags shut to protect from rain and snow and prevent leaves from blowing away.



Leaves that are not in paper yard waste bags will not be picked up.

Use only paper yard waste bags, available at stores or for free from the city (see calendar page for locations).

Please **do not** include garbage, litter, bricks, rocks, animal waste, or soil.

For additional questions about yard waste and leaf collection, contact the hotline at 717-291-4744.

This is a reminder that leaves from your yard are not to be pushed into the street.



Per § 258-21 of the City of Lancaster Code, including corresponding enforcement provisions § 238-27 both of which were adopted in August of the year 2000, leaves may be swept from the **public sidewalk** into the gutters on the day prior to or on the day of the sweeping. Leaves on **private property**, such as side and front yards, however, shall not be swept or deposited in the public right-of-way, but shall be disposed of properly by the property owner or the person responsible for the property. Our street sweeping equipment cannot handle the volume of leaves in the street when residents sweep large amounts of leaves from the yard into the street.

Unlimited complimentary yard waste bags are available for Lancaster City residents at:

Recycling Drop Off Center - 850 New Holland Ave.

Monday – Friday 7:00 am to 4:00 pm
Every third Saturday of the month,
7:00 am – 11:00 am.

City Hall - 120 N. Duke St.

Monday – Friday, 8:30 a.m. – 5:00 p.m.

Treasury Office - 39 W. Chestnut St.

Monday – Friday, 8:30 a.m. – 5:00 p.m.

Streets Department - 225 Riverside Ave.

Monday – Friday, 8:30 a.m. – 4:30 p.m.

Leaves in yard waste bags are collected alongside regular trash and recycling on specific weeks starting April through December.

Recycling is the Law

Recycling is mandatory in the City for all residents; commercial, industrial and institutional establishments; and municipal facilities.

Recyclables required for separation from waste include: paper, glass, aluminum, steel/tin cans, plastics, yard waste/leaves, white goods and tires. The City's residential contract program collects many items together as "Single Stream". City SWEEP Officers (Solid Waste Education and Enforcement Program) routinely inspect residential and commercial properties for compliance.



Commercial Recycling Services

Permitted Haulers

City regulations require that private waste and recycling haulers be registered as "Permitted Collectors." Haulers properly registered will have current year stickers on all their collection vehicles. Permitted Collectors must also provide recycling collection services so that their customers can fully comply with recycling requirements. Permitted Collectors must meet the standards established by city, county and state regulatory agencies and maintain vehicles in compliance with motor vehicle standards. The city maintains a list of Permitted Collectors.

Commercial Opt In Program

The city residential contract program offers collection services to small businesses and institutions that generate quantities of waste and types of recyclables similar to a household. Many small businesses, multi-family residential properties (5 or more units), and mixed-use properties that need only once per week collection are served by the city program and invoiced at the same annual fee as residential customers. For additional information about services and options, please contact the Solid Waste Hotline at 717-291-4744.

2023 Lancaster City Trash & Recycling Collection Calendar

JANUARY							FEBRUARY							MARCH							APRIL						
S	M	T	W	T	F	S	S	M	T	W	T	F	S	S	M	T	W	T	F	S	S	M	T	W	T	F	S
1	2	3	4	5	6	7				1	2	3	4				1	2	3	4							1
8	9	10	11	12	13	14	5	6	7	8	9	10	11	5	6	7	8	9	10	11	2	3	4	5	6	7	8
15	16	17	18	19	20	21	12	13	14	15	16	17	18	12	13	14	15	16	17	18	9	10	11	12	13	14	15
22	23	24	25	26	27	28	19	20	21	22	23	24	25	19	20	21	22	23	24	25	16	17	18	19	20	21	22
29	30	31					26	27	28					26	27	28	29	30	31		23	24	25	26	27	28	29
																					30						

MAY							JUNE							JULY							AUGUST						
S	M	T	W	T	F	S	S	M	T	W	T	F	S	S	M	T	W	T	F	S	S	M	T	W	T	F	S
	1	2	3	4	5	6					1	2	3							1			1	2	3	4	5
7	8	9	10	11	12	13	4	5	6	7	8	9	10	2	3	4	5	6	7	8	6	7	8	9	10	11	12
14	15	16	17	18	19	20	11	12	13	14	15	16	17	9	10	11	12	13	14	15	13	14	15	16	17	18	19
21	22	23	24	25	26	27	18	19	20	21	22	23	24	16	17	18	19	20	21	22	20	21	22	23	24	25	26
28	29	30	31				25	26	27	28	29	30		23	24	25	26	27	28	29	27	28	29	30	31		
														30	31												

SEPTEMBER							OCTOBER							NOVEMBER							DECEMBER						
S	M	T	W	T	F	S	S	M	T	W	T	F	S	S	M	T	W	T	F	S	S	M	T	W	T	F	S
					1	2	1	2	3	4	5	6	7				1	2	3	4						1	2
3	4	5	6	7	8	9	8	9	10	11	12	13	14	5	6	7	8	9	10	11	3	4	5	6	7	8	9
10	11	12	13	14	15	16	15	16	17	18	19	20	21	12	13	14	15	16	17	18	10	11	12	13	14	15	16
17	18	19	20	21	22	23	22	23	24	25	26	27	28	19	20	21	22	23	24	25	17	18	19	20	21	22	23
24	25	26	27	28	29	30	29	30	31					26	27	28	29	30			24	25	26	27	28	29	30
																					31						

- = Christmas Tree Collection
- = White Goods Collection
- = Yard Waste Collection

Observed holidays are noted in **RED**. Collection days that fall on or after the holiday will be delayed one day. EXCEPTION: If holiday falls on a Saturday or Sunday, there is no change in service prior to or after the holiday.

Basic Residential Guidelines



- Trash and Recycling must be placed at curbside by 5:00 AM on scheduled collection day.
- Trash must be secured in a can or heavy-duty bag to prevent spillage and littering. Do not overfill cans.
- Each trash container or bag must not exceed 32 gallons or 30 pounds, with a limit of 6 per week. One over-sized item may be substituted for two trash containers. A 96 Gallon Curb Cart equals three trash containers.
- Yard Waste bags and bundles must not exceed 30 pounds or 4 feet in length.
- Yard Waste and Christmas trees will be collected on trash day according to the Calendar schedule.
- White Good/Large Appliance collection will occur the 3rd Friday of each month (See Calendar). A \$15 tag must be obtained at the Treasury Office, 39 W. Chestnut St (717) 735-3425.
- Penn Waste leases 96 Gallon Trash Curb Carts for \$6 per month billed separately on a quarterly basis.
- For information, sign up for E-News Updates at www.pennwaste.com or call 717-767-4456.



Recycling Bins and Free Yard Waste Bags Available at:

Recycling Drop Off Center 850 New Holland Ave

